

# ENHANCING THERMAL MANAGEMENT WITH PARKER'S CDT SERIES COUPLINGS

As a leader in thermal management solutions, **Parker Quick Coupling Division (QCD)** consistently drives innovation in the electronics industry. With decades of expertise, Parker's **CDT Series** provides an advanced liquid cooling component designed to meet the dynamic demands of today's high-powered data centers and supercomputers.

These couplings are crucial in managing the intense heat generated by server racks, ensuring optimal performance and sustainability. Our cutting-edge technology and comprehensive approach are raising the standard for efficiency and reliability in thermal management.

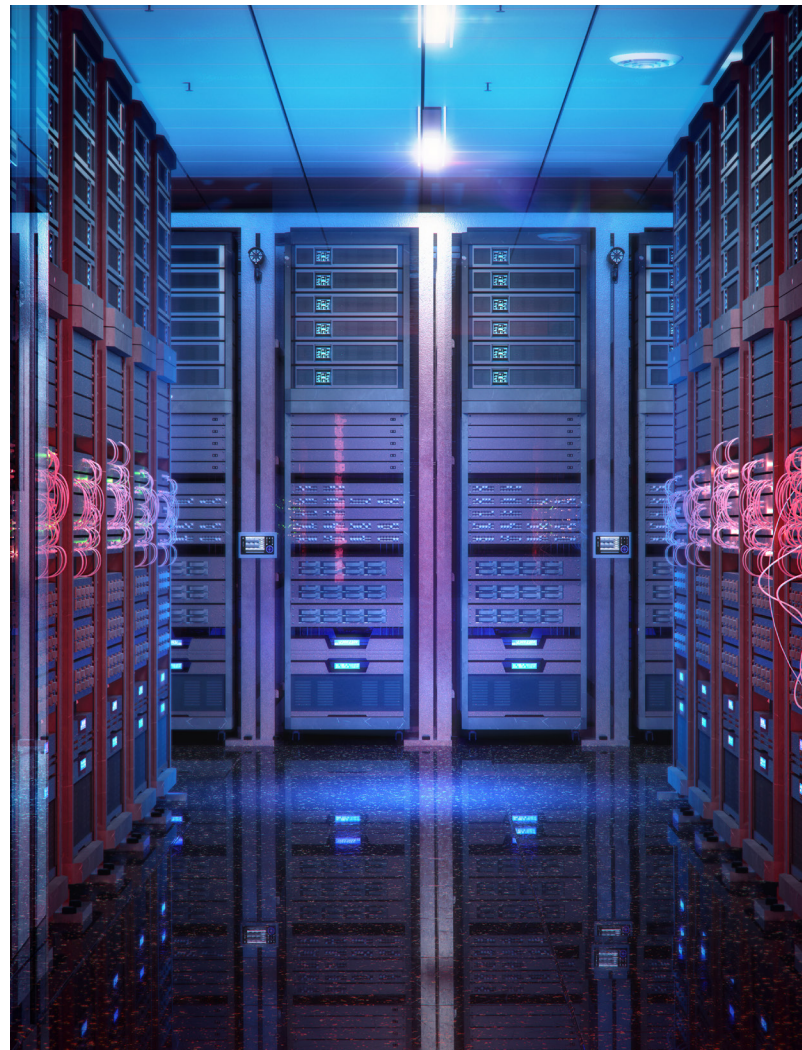
## Parker's CDT Series

CDT Series is a flat-face coupling designed for liquid cooling and thermal management applications for electronics, servers, and supercomputers. The CDT Series is based on the OCP, Large Quick Connector Specification, and meets these performance requirements. This is also referred to in the industry as the "LGQC".

The CDTs are dry-break, thread-to-connect quick disconnects for inlets and manifolds in liquid cooling systems. The threaded connection provides a mechanical advantage for safely connecting and disconnecting.

## CDT Series Features

- Flush face valve design prevents fluid loss and optimum protection of electrical components
- Reduced pressure drop for superior energy efficiency and system performance
- High resistance to vibrations and rotation
- Thread-to-connect design provides an ergonomically friendly connection sequence
- Manufacturing process that eliminates contamination
- Global manufacturing and service capabilities



Part Number	Coupling Half	Connection Thread Size
CDT-1001-16FB	Female Coupler	G 1-11 BSPP
CDT-1002-16FB	Male Nipple	G 1-11 BSPP

<b>Max Working Pressure*</b> 174 psi / 12 bar *maximum static working pressure with safety factor 4 to 1.	<b>Working Temperature</b> 0°C to 60°C
<b>Material</b> Coupling: Stainless Steel Plug: Stainless Steel Seals: EPDM	<b>Connect Force</b> 0 psi: 31 in-lbs (3.5 Nm)
<b>CV Values</b> 15.9	<b>Spillage/Air Inclusion</b> 0.10ml / 0.83ml

### CDT Series Applications

- Liquid Cooling
- Thermal Management
- Data Centers
- Supercomputers
- Electronics
- Servers
- Rackable Server Systems

Parker Hannifin Corporation  
**Quick Coupling Division**  
 8145 Lewis Road  
 Minneapolis, MN 55427  
 phone 763 544 7781  
 fax 763 544 3418  
[Parker.com/Thermal-Management-Connectors](http://Parker.com/Thermal-Management-Connectors)

CDT Series Bulletin 08/24

Scan to  
 view product  
 information

